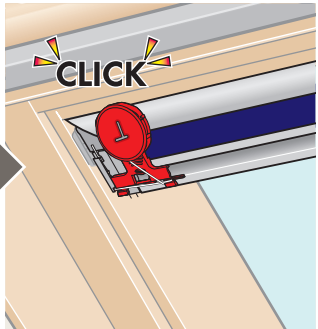
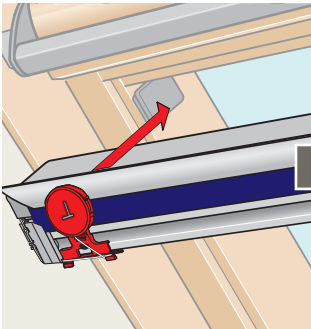
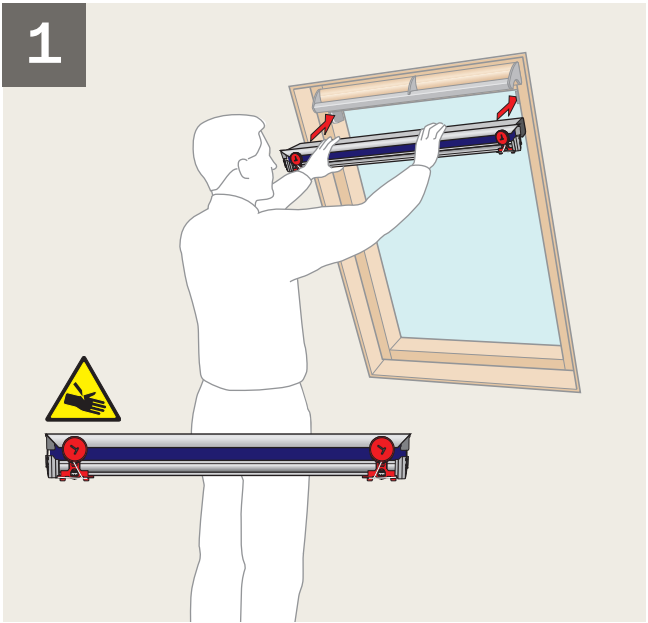
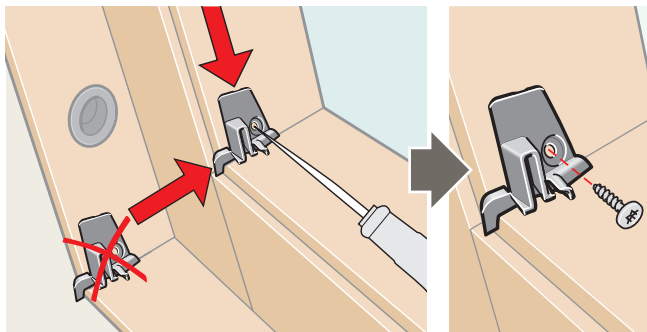
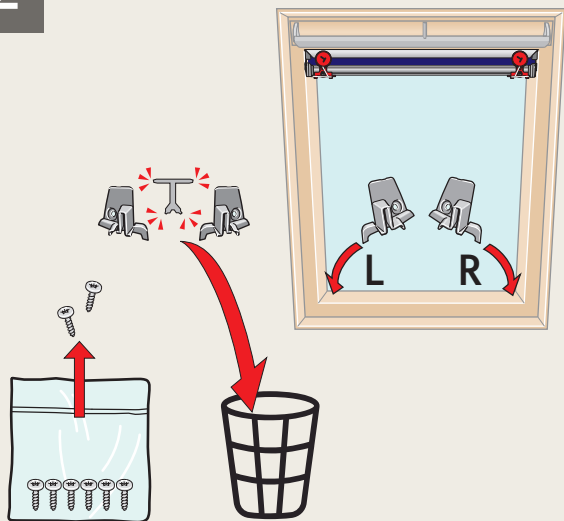


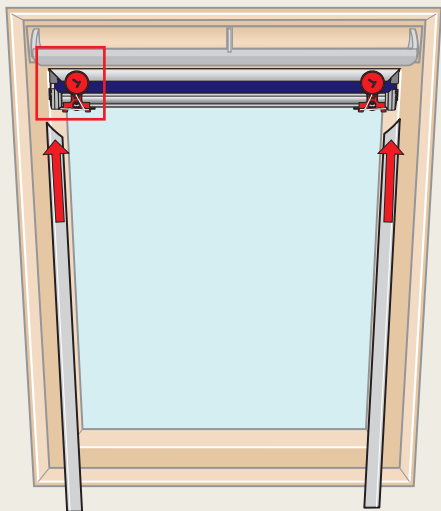
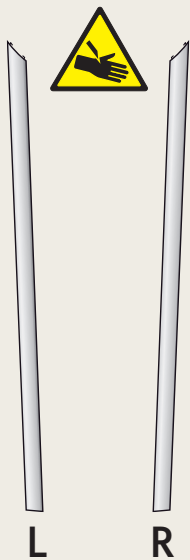
1

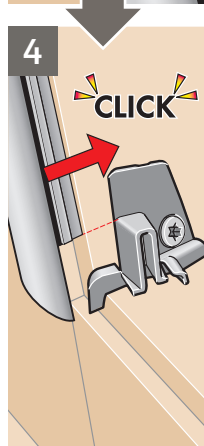
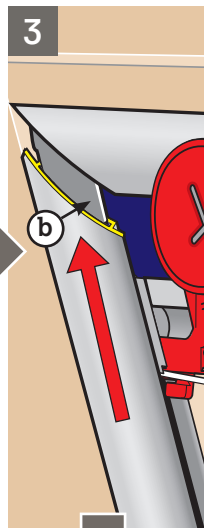
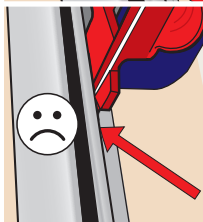
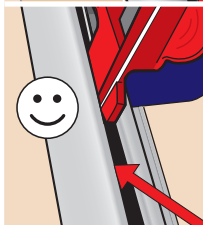
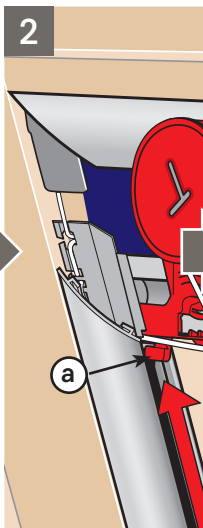
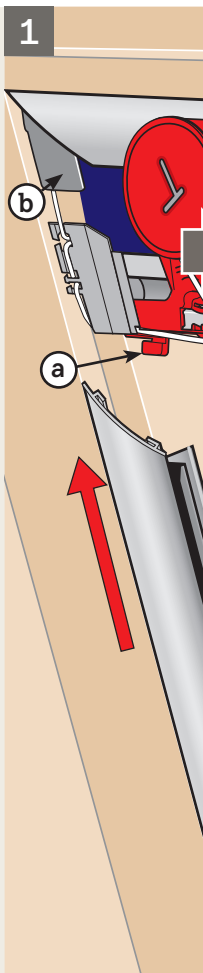


2



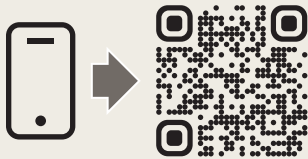
3





VELUX®

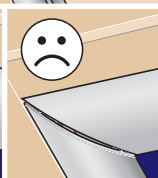
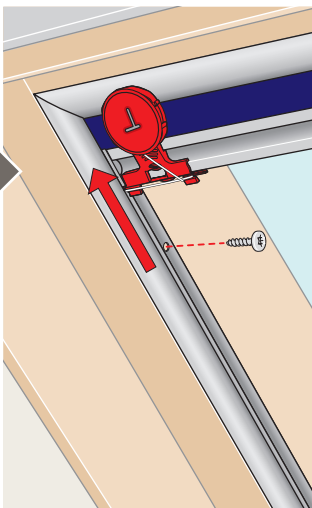
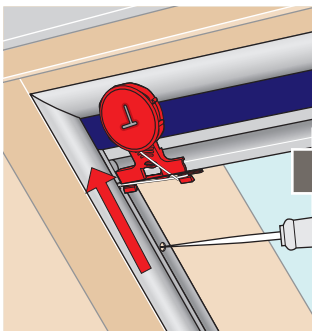
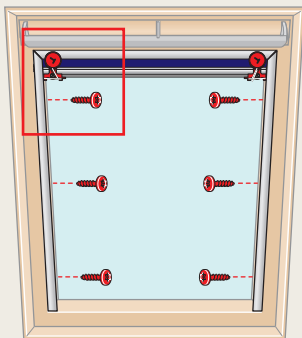
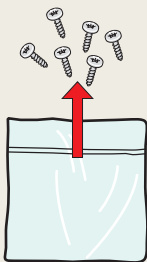
www.velux.com



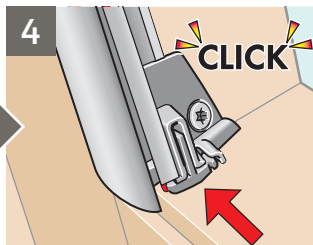
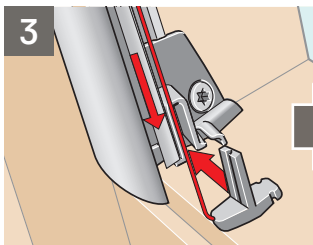
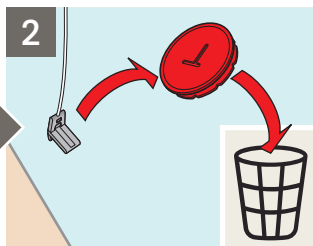
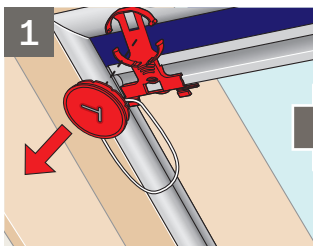
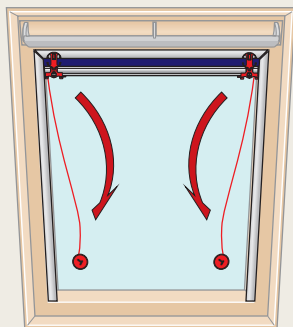
velux.com/contact

INSTALLATION INSTRUCTIONS FOR BLACKOUT BLIND DKL ©2024, 2025 VELUX GROUP
®VELUX AND THE VELUX LOGO ARE REGISTERED TRADEMARKS USED UNDER LICENCE BY THE VELUX GROUP

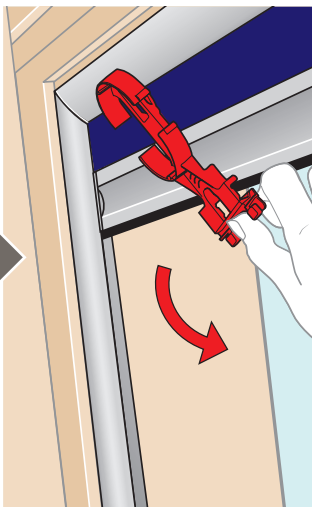
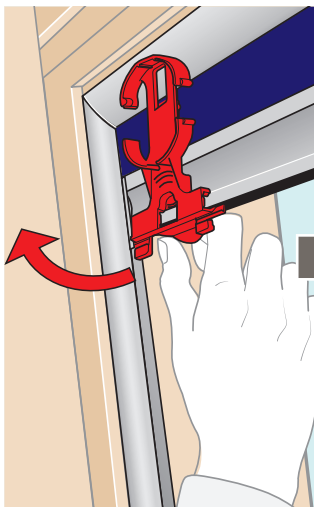
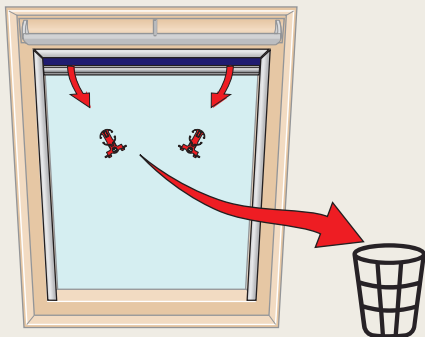
4

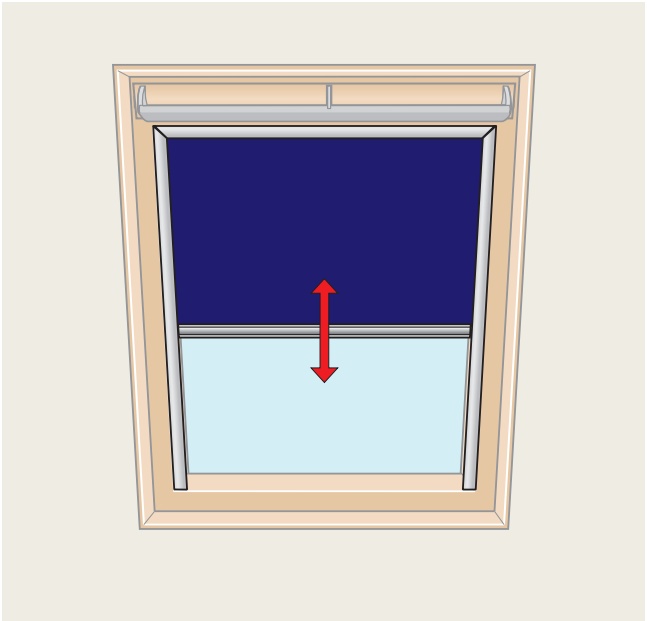


5



6







ENGLISH: Add an awning blind

- Reduce heat in the most effective way
- Weather resistant fabric for long lasting performance

DEUTSCH: Mit zusätzlicher Hitzeschutz-Markise kombinieren

- Effektive Hitzereduktion
- Wetterbeständiges Gewebe für lange Haltbarkeit

FRANÇAIS : Ajoutez un store extérieur pare-soleil

- Réduisez efficacement la chaleur
- Toile résistante aux intempéries

DANSK: Kombinér med et udvendigt solgardin

- Reducér varmen effektivt
- Holdbart og vejrbestandigt stof

ESPAÑOL: Añada un toldo exterior

- Reduzca el calor de la forma más eficaz
- Tejido altamente resistente para lograr un rendimiento duradero

ITALIANO: Aggiungi una tenda parasole esterna

- Riduci il calore nel modo più efficace
- Tessuto resistente alle intemperie per garantire prestazioni di lunga durata

NEDERLANDS: Voeg een buitenzonwering toe aan uw dakraam

- De meest effectieve manier om de hitte te reduceren
- Weerbestendig materiaal voor duurzaam gebruik

POLSKI: Dodaj markizę

- Zmniejsz stopień nagrzewania pomieszczeń w najbardziej skuteczny sposób
- Trwała i odporna na działanie czynników atmosferycznych tkanina

MAGYAR: Egészítse ki hővédő rolóval

- A lehető leghatékonyabban csökkentse a hőmérsékletet
- Időjárásálló szövet, mely hosszú távon biztosítja a tartósságot

DKL



VELUX®



VAS 455300-2025-04